



A radio button or option button is a graphical control element that allows the user to choose only one of a predefined set of options. It's a two-states button that can be either checked or unchecked.

To provide you with the ease, Configure.IT gives you this functionality in the form of control and does away with assembling buttons and label to use the same.

## RADIO BUTTON

### Properties

#### CUSTOM BORDER

PARAMETER	DESCRIPTION
Border Width	Sets border width for a Radio Button.
Border Corner Radius	Sets radius with which control's rounded corners should be drawn. Setting this property will enable control appear with rounded corners.
Border Color	Sets the border color for a control. Works only if "Border Width" property is set to a value more than 0. Default would be black color.
Dash Width For Dashed Border	Sets width of each dash in dashed border pattern for a Radio Button.
Transform Angle	Sets angle in degrees to which the Radio Button which is in its normal state, has to be rotated. Possible values for this property are -360 to 360.
Space Between Dashes For Dashed Border	Helps set the spacing between Dashes for Dashed Border.

#### DISPLAY/TEXT

PARAMETER	DESCRIPTION
Font Family	Select and set the Font type as desired, from the list of available options.
Font Size	Sets the desired size of the Font.
Line Break Mode	The technique to use for wrapping and truncating the Radio Button's title.
Custom Font Name	Sets custom font name (special font, not available in default fonts) for title to be displayed in Radio Button.

## DISPLAY

PARAMETER	DESCRIPTION
Button State	Set the state of Button to either of the following: normal, highlighted, selected or disabled.
Highlighted Title	Sets the title to use for the Highlighted state.
Normal Title	Sets the title to be used as the default state.
Disabled Title	Sets the title to use for the disabled state.
Selected Title	Sets the title to use for the Selected state.
Highlighted Title Color	Sets the color for the title to use for the Highlighted state.
Normal Title Color	Sets the color for the title to be used for the Normal state.
Selected Title Color	Sets the color for the title to use for the Selected state.
Disabled Title Color	Sets the color for the title to use for the disabled state.
Normal Title Shadow Color	Sets the shadow color for the title to use for the Highlighted state.
Highlighted Title Shadow Color	Sets the shadow color for the title to use for the Normal state.
Selected Title Shadow Color	Sets the shadow color for the title to use for the Selected state.
Disabled Title Shadow Color	Sets the shadow color for the title to use for the disabled state.
Highlighted Image	Set the image to the Object in Highlighted State
Normal Image	Sets the Image to use for the Normal state.
Selected Image	Sets the Image to use for the Selected state.
Disabled Image	Sets the Image to use for the disabled state.
Normal Background Image	Sets the Background Image to use for the Normal state.
Selected Background Image	Sets the Background Image to use for the Selected state.
Highlighted Background Image	Sets the Background Image to use for the Highlighted state.
Disabled Background Image	Sets the Background Image to use for the disabled state.
Selected	A Boolean value that changes picker button's state to "selected".
Highlighted	A Boolean value that changes picker button's state to "highlighted".
Enabled	A Boolean property that indicates whether the gesture recognizer is enabled.
Content Horizontal Alignment	Sets the horizontal alignment for content (text or image or both) of button.
User Interaction Enabled	Enables the Interaction with user, i.e. control responds when user taps on it.
Content Vertical Alignment	Sets the vertical alignment for content (text or image or both) of button.
Alpha	Used to set the transparency to the object which ranges from 0 to 1.
Background Color	Used to set the background color to the Radio Button.
Tint Color	Sets tint color for Radio Button.
Drawable Type	Adjusts the position of Image in sync with the Text.
Drawable Padding	Padding is defined as space between the edges of the view and the view's content. Drawable Padding is the padding between the drawables and the text. Sets the padding, in pixels, of all four edges.

## OBJECT

PARAMETER	DESCRIPTION
Xpos	Sets the X position of the Radio Button.
YPos	Sets the Y position of the Radio Button.
Width	Sets the width of the Radio Button.
Height	Sets the height of the Radio Button.
Object ID	Sets unique identifier for the control. Control can be referenced with name set in this property for configuration.
Object Parent ID	Set "Object ID" of Radio Button which contains this control or can serve as parent.
Key Name To Data	Sets the web service key from data received from web server, which corresponds to the value to be displayed on the control.
Button Title	This property sets key name of web service whose value has to be displayed as title for Radio Button (comma separated if multiple key names).
Group Name	Group Name sets the identifier for a group of Radio Buttons. "Group Name" property for all radio buttons of same group should be set to same value.
Allow Multi Selection	This property is for adding checkbox functionality to Radio Button control group where user can select multiple options.

## ADVANCED

PARAMETER	DESCRIPTION
Title Shadow Offset X	The horizontal offset of the shadow used to display the button's title. Positive value always extend to the right from the user's perspective.
Title Shadow Offset Y	The vertical offset of the shadow used to display the button's title. Positive value always extend up from the user's perspective.
Reverses Title Shadow When Highlighted	If checked the checkbox, the picker button title shadow changes from engrave to emboss appearance when highlighted.
Shows Touch When Highlighted	A Boolean value that determines whether tapping the Radio Button causes it to glow.
Adjusts Image When Highlighted	A Boolean value that determines whether the image changes when the Radio Button button is highlighted.
Adjusts Image When Disabled	A Boolean value that determines whether the image changes when the Radio Button is disabled.
Edge	Sets the edge inset properties for the content within the button separately. i.e, there are three possible contents of button - Title, Image or Content (both image and title included). Whereas there are 4 edge properties of button which can be set separately for each content type.
Top Content Edge Insets	The inset or outset margins for the rectangle surrounding top of the object's content.
Top Title Edge Insets	Sets the inset or outset top margin for the button title. A positive value shrinks, or insets, top edge-moving it closer to the center of the button. A negative value expands, or outset, top edge-moving it away from center of the button.
Top Image Edge Insets	The inset or outset margins for the rectangle surrounding top of the object's image.
Bottom Content Edge Insets	The inset or outset margins for the rectangle surrounding bottom of the object's content.
Bottom Title Edge Insets	Sets the inset or outset bottom margin for the button title. A positive value shrinks, or insets, bottom edge-moving it closer to the center of the button. A negative value expands, or outset, bottom edge-moving it away from center of the button.
Bottom Image Edge Insets	The inset or outset margins for the rectangle surrounding bottom of the object's image.
Left Content Edge Insets	The inset or outset margins for the rectangle surrounding left of the object's content.
Left Title Edge Insets	Sets the inset or outset left margin for the button title. A positive value shrinks, or insets, left edge-moving it closer to the center of the button. A negative value expands, or outset, left edge-moving it away from center of the button.
Left Image Edge Insets	The inset or outset margins for the rectangle surrounding left of the object's image.
Right Content Edge Insets	The inset or outset margins for the rectangle surrounding right of the object's content.
Right Title Edge Insets	Sets the inset or outset right margin for the button title. A positive value shrinks, or insets, right edge-moving it closer to the center of the button. A negative value expands, or outset, right edge-moving it away from center of the button.
Right Image Edge Insets	The inset or outset margins for the rectangle surrounding right of the object's image.

## CIT CUSTOM PROPERTIES

PARAMETER	DESCRIPTION
Place Holder Image	Sets dummy image to display while image data is being received from web server.
Local Image Folder Name	This property is for setting image path if image is already downloaded. e.g /Documents/ProfileImages/
Transform Angle For Selected State	This property is for setting angle in degrees to which control in its selected state has to be rotated. Possible values for this property are -360 to 360.

## VERTICAL

PARAMETER	DESCRIPTION
Vertical Group	Group of vertical android default properties.
Reference Type	These are the android default properties to set selected view with respect of other view.
Reference Value	Reference object that is used for positioning selected object
Offset Type	<b>marginTop</b> : Specifies extra space on the top side of this view. This space is outside this view's bounds. <b>marginBottom</b> : Specifies extra space on the bottom side of this view. This space is outside this view's bounds.
Offset Value	Value defines the extra space value in pixel.
Center Vertical	This property centers the child vertically with respect to the bounds of its parent view.
Apply Vertical Custom Properties	If any of the vertical layout setting parameter(s) are selected then this value is selected to indicate user applied vertical custom layout setting parameter(s).

## HORIZONTAL

PARAMETER	DESCRIPTION
Horizontal Group	Group of horizontal android default properties.
Reference Type	Reference type is the the default property to set selected view with respect to other view.
Reference Value	Reference object that is used for positioning selected object.
Offset Type	<b>marginLeft</b> : Specifies extra space on the left side of this view. This space is outside this view's bounds. <b>marginRight</b> : Specifies extra space on the right side of this view. This space is outside this view's bounds.
Offset Value	Offset Value defines the extra space value in the pixel.
Center Horizontal	This property centers the child horizontally with respect to the bounds of its parent view.
Apply Horizontal Custom Properties	If any of the horizontal layout setting parameter(s) are selected then this value is selected to indicate user applied horizontal custom layout setting parameter(s).

## DISPLAY/ADVANCETEXT

PARAMETER	DESCRIPTION
Hide	Hiding an element can be done by checking 'Hide'. This property lets you hide the control.  <b>Advance</b> - Sets auto resizing with respect to superview, for Radio Button.

## LAYOUT SETTING

PARAMETER	DESCRIPTION
Horizontal	Group of horizontal android default properties.
Vertical	Group of vertical android default properties.
Layout Width	Sets the width of the view match_parent/fill_parent : Takes the width as its parent view wrap_content : Takes the width as its content's width
Layout Height	Sets the height of the view match_parent/fill_parent : Takes the height as its parent view wrap_content : Takes the height as its content's height
Left	The padding is expressed in pixels for the left, top, right and bottom parts of the view. Padding can be used to offset the content of the view by a specific amount of pixels.  For instance, a Left value of 2 will push the view's content by 2 pixels to the right of the left edge.
Right	For instance, a Right value of 2 will push the view's content by 2 pixels to the left of the right edge.
Top	For instance, a Top value of 2 will push the view's content by 2 pixels to the bottom of the top edge.
Bottom	For instance, a Bottom value of 2 will push the view's content by 2 pixels to the top of the bottom edge.
Apply Custom Properties	If any of the layout setting parameter(s) are selected then this value is selected to indicate user applied custom layout setting parameter(s).
Center In Parent	This property centers the child vertically with respect to the bounds of its parent view.
Default Min Height	The height of the view cannot be less than the given value. If user select "Default Min Height" then android default value is taken otherwise it takes 0dp.
Default Min Width	The width of the view cannot be less than the given value. If user select "Default Min Width" then android default value is taken otherwise it takes 0dp.

## Actions

### Click

This event is triggered when user taps Button, Bar Button Item, Bar Code Button, Date Picker, Picker View, Image Picker, Multi DataSource Picker, Multiple Selection Picker, Navigation Indicator Button, Radio Button and Stepper controls. Any actions you want perform when user taps any of the mentioned controls can be configured in "Click" event listed in "ACTION(S)" tab of the control.

### Alert Button Click

This event is triggered when user taps a button on alert view, which was shown using "Show Alert" action, so any actions you want perform when alert button button is tapped can be configured in "Alert Button Click" event listed in "ACTION(S)" tab of the control on which you have configured "Show Alert" action or Under Data source events of "Data sources" tab (if alert was shown on using "Show Alert" action configured in "Datasource Loaded" event of a data source in "Data Sources" list, you can configure actions of alert button click in "Alert Button Click" listed under data source events). "seletedButtonIndex" and "selectedButtonText" are the response parameters which indicate which button is tapped by user. Add condition for checking value of "seletedButtonIndex" or "selectedButtonText" response parameter value in order to configure actions for each button of alert view separately. You can access user input in alert view text fields using "alert\_text\_1" and "alert\_text\_2" response parameters in case of alert type is "SecureTextInput", "PlainTextInput" or "LoginAndPasswordInput"

Following are the response parameters for this event :-

- 1) selectedButtonIndex :- Index of the tapped button
- 2) selectedButtonText :- Title of the tapped button
- 3) alert\_text\_1 :- Text entered by user in text field one. If alert type is "SecureTextInput", "PlainTextInput" or "LoginAndPasswordInput"
- 4) alert\_text\_2 :- Text entered by user in text field two(password). If alert type is "LoginAndPasswordInput"

### Sharing Done

This event is triggered when social media sharing action is completed. Sharing action is initiated using Facebook, Twitter, Google+, LINKED\_IN, INSTAGRAM or Open Share Activity(Google+ share) actions. On Sharing success or failure "Sharing Done" event will be triggered, so any actions you want perform on success or failure, can be configured in "Sharing Done" event listed in "ACTION(S)" tab of the control on which you have configured "Facebook", "Twitter", "Google+", "LINKED\_IN", "INSTAGRAM" or "Open Share Activity" actions. "success" is the response parameter of "Sharing Done" which indicates success or failure of sharing action. "success" value would be "1" on successful sharing and "0" on failure, add condition for checking "success" parameter value in order to configure actions for success and failure of sharing separately.



## Timer Fired

This event is triggered when timer(which was started using "Set Timer" action) is fired. Any actions you want perform on timer fired event can be configured in "Timer Fired" event listed under "ACTION(S)" tab of the control on which you have configured "Set Timer" action.

## Value Changed

This event is triggered when value of a control is changed. i.e, when a page of a "Page Control" is changed by tapping on one of the dots, when one the "Radio Button"s form Radio Button group is tapped, when a rating from "Rating View" is selected by tapping on a star, when one of the segments of "Segment Control" is tapped, when "Slider" control value is changed and when "Switch" control is toggled. Any actions you want to perform when value of a control can be configured in "Value Changed" event listed in "ACTION(S)" tab of respective control specified above.

Response Parameters for this event for applicable controls are:-

- 1) Segment Control : - "selectedSegmentIndex" index of the selected segment.
- 2) Page Control :- "currentPageIndex" selected page index.

If control resides on Table View Cell response parameters would also include data associated with cell whose control value is changed.

## Remarks

### Allow Multi Selection

This property adds checkbox functionality to Radio Button control group where user can select multiple options from Radio Button group. If this property is enabled then user can select multiple options, else user can select only one option at a time i.e, when user makes a selection previous selected radio button will be deselected. Make sure you have enabled "allow Multi Selection" property for all radio buttons in the group, else results can be inconsistent.

### Button Title

Button title is for identifying the selected button in radio buttons group while configuring conditions or sending input parameters to API. You need to set unique button title for each button in the group. If you do not set "Button Title" property, button's normal title will be taken into consideration, in that case make sure that you have set unique button title for each button in normal state. You can also set API response key name, whose value has to be set as "Button Title".

## Related faqs

---

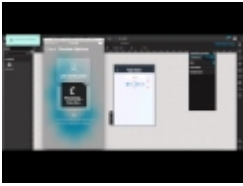
What is the significance "Group Name" property?

---

Can I use different images for radio buttons instead of default one's provided by you?

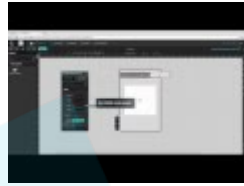


# RELATED VIDEOS



## How to configure Radio Button

This video demonstrates, how to configure Radio Buttons. Radio buttons here are used to select a...



## How to configure Segment Controller

This Video demonstrates how to configure Segment Controller. A Segment Control is a horizontal...



## How to configure switch controller

In this video we will view how to configure switch controller. This control is in general used to...



## How to configure Map view

This Video demonstrates, how to configure Map view. Map View control provides an embeddable map...